

THE ROLLING THUNDER



April 2024

SHERMAN COUNTY SWCD & WATERSHED COUNCIL

Soil & Water Conservation District

Upcoming Meetings

The next SWCD meeting is May 14th at 8:30 am in the USDA Service Center Conference Room. There will be a short budget hearing before the meeting.

County Cost Share

The SWCD has County Cost Share (CCS) grants still available! CCS funds conservation projects in crop, range, and/or riparian areas. We have made some changes to our CCS program. Haul roads and boundary fence are no longer limited by product/distance. You can now apply for those projects the same as the other projects. Eligible projects include **cross and border fencing, haul roads, spring development, solar water development, weed treatment, range seeding, riparian restoration, and more.** Projects up to \$20,000 have a 75% cost share rate. Our completion deadline for all CCS projects is now 2 years from the date of approval. Call the SWCD at 541-565-3216 to learn more or to apply. There is no deadline to apply. Applications are reviewed every month at SWCD board meetings.



Sherman County SWCD is hiring! We currently have two open positions:

Full time Watershed Technician: Will provide outreach and technical assistance to landowners for programs offered and managed by the Sherman County SWCD and USDA. The Technician will provide support for the SWCD on all aspects of conservation projects (design, implementation, completion, and monitoring), grant submittals and tracking, and provide Farm Bill support.

Full time Watershed Coordinator: Duties include coordinate and administer Sherman County Area Watershed Council, organize Council meetings, write and edit documents/grants and coordinate projects on behalf of the watershed councils, and provide public outreach and education.

Entry level salary range for both positions is \$44,117 to \$59,966 annually, Depending on Experience. Benefits include full health, vision, and dental along with paid time off for vacation and sick and 11 paid holidays. Full job description and application instructions can be found at www.shermancountyswcd.com. The SWCD is an equal opportunity employer and service provider.

Send cover letter, resume and employment application to Sherman County SWCD, PO Box 405, Moro, Oregon 97039, or email amanda.whitman@or.nacdnet.net. For more information call (541) 565-3216. Position open until filled.

How to Reach Us

USDA Service Center (Open Monday through Friday, 8:00am—4:30pm)

Sherman County's USDA Service Center houses Farm Service Agency (FSA), Natural Resource Conservation Services (NRCS), Sherman County Soil & Water Conservation District (SWCD), and Sherman County Area Watershed Council. We are located at 2004 First Street in Moro, just down the hill from the OSU Extension Office.

How to reach us:

Amanda Whitman - SWCD District Manager
541-565-3216 ext. 109
Amanda.whitman@or.nacdnet.net



Marylou Martin— SWCD Office Assistant
541-565-3216 ext. 101
shermancountywc@gmail.com

Farm Service Agency (FSA)

FSA Deadlines:

- May 27, 2024 – Federal Holiday – All USDA Service Centers Closed
- June 19, 2024 – Federal Holiday - All USDA Service Centers Closed
- July 15, 2024 – Spring Acreage Reporting Deadline – all Spring planted grain, Grass for Grazing and CRP
- July 15, 2024 – Final date to report Production for 2023 crop year for farms enrolled in ARC-IC
- September 30, 2024 – Deadline for ALL Signatures to be received and enrollment complete for late-filed ARCPLC Contracts

FSA Reminds CRP Participants of Weed Control Requirements

We have seen significant moisture this year and with the added moisture comes added growth of not only good grasses and crops, but also those pesky weeds (especially noxious weeds).

All CRP participants need to comply with the Oregon Noxious Weed Law and ensure noxious weeds are controlled. They also need to make sure annual weeds, insects, and rodents do not inhibit the established practice from controlling erosion for the CRP contract period. These requirements are part of the terms of your CRP contract. Please contact this office or the County Weed Supervisor to obtain a current list of noxious weeds.

Failure to abide by the terms of your CRP contract can result in the application of a payment reduction, termination of the affected CRP acres, or termination of the entire CRP contract(s). The County FSA Committee (COC) does not wish to apply any of these penalties for failure to carry out the terms of the CRP contracts, and those penalties can be avoided when proper insect and weed control measures are performed in a timely manner.

The County FSA Committee (COC) is required to review all CRP maintenance work done during the **PRIMARY NESTING SEASON (PNS) OF MARCH 1 TO JULY 15**. Weed control work during this period will be limited to spot treatment of the affected areas. **Please submit requests in writing to the COC for prior approval.**

Also, please keep in mind that procedure does not allow grazing of CRP except for acreage under a strict managed grazing plan. Penalties may apply where grazing is evident on CRP acreage before the expiration date of the contract.

Maintaining ARC/PLC Acreage

If you're enrolled in the Agriculture Risk Coverage (ARC) or Price Loss Coverage (PLC) programs, you must protect all cropland and noncropland acres on the farm from wind and water erosion and noxious weeds. By signing ARC county or individual contracts and PLC contracts, **you agree to effectively control noxious weeds on the farm according to sound agricultural practices.** If you fail to take necessary actions to correct a maintenance problem on your farm that is enrolled in ARC or PLC, the County Committee may elect to terminate your contract for the program year.

Maps for Acreage Reporting Are Available

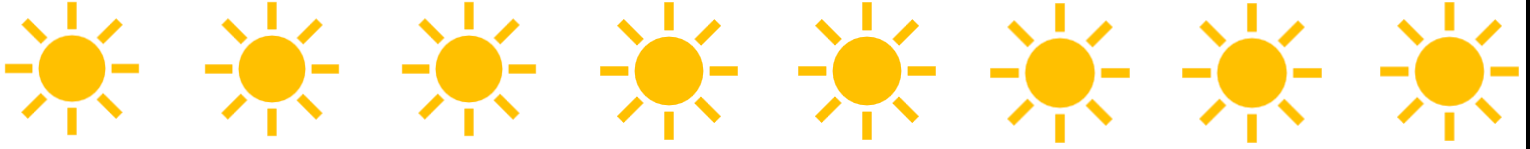
Maps are now available at the Sherman County FSA Office for acreage reporting purposes. If you wish to receive your maps by e-mail, please call our office or email Kayci Sharp at Kayci.Sharp@usda.gov. Please see the following acreage reporting deadlines for Sherman County:

- July 15, 2024- for all 2024 acreage reports including spring planted grain, grass for grazing and CRP

In order to maintain program eligibility and benefits, you must file timely acreage reports. Failure to file an acreage report by the crop acreage reporting deadline may cause ineligibility for future program benefits. FSA will not accept acreage reports provided more than a year after the acreage reporting deadline.

Producers are encouraged to file their acreage reports as soon as planting is completed.

Let's Talk Solar



With the increase talk of solar projects coming to the County, know your options. American Farmland Trust provides a solar leasing guide to help you determine if solar is right for you and your land, what steps to take through the contract process, what to expect at the end of the contract, and much more. Also, don't be afraid to contact your local Conservation Office to see what effects it could have on your current conservation practices and contracts.

If solar and wind is not something you want to see go on to your land there are options to keep those lands protected. Oregon's well-managed agricultural lands are the cornerstone of the state's rural communities. They support valuable fish and wildlife habitats and enhance other natural resources. Yet farms and ranches are increasingly challenged by fragmentation of farmland, conversion of farmland to non-farm uses, complex regulations, and planning for generational transfers.

The State Legislature established the Oregon Agricultural Heritage Program (OAHP) in 2017 to help address these challenges. The program provides voluntary incentives to farmers and ranchers to support practices that maintain or enhance both agriculture and natural resources such as fish and wildlife on agricultural lands. OAHP was developed by a collaboration of organizations representing natural resource conservation and agriculture, including farmer and rancher representatives. Visit [Oregon Watershed Enhancement Board : Oregon Agricultural Heritage Program \(OAHP\) : Oregon Agricultural Heritage Program : State of Oregon](#) for more information. Oregon Ag Trust (OAT) is an agricultural land trust that works collaboratively around the state to safeguard Oregon's farm and ranch lands and the rural communities that depend upon them. We permanently protect ag land, help it stay in production, educate our community, and help advocate for farmland preservation. You can find more information out about what OAT can do for you at [Oregon Agricultural Trust \(oregonagtrust.org\)](#).

OWEB Small Grant Funding

Small Grant Funding Available!

We have Oregon Watershed Enhancement Board (OWEB) funding available. Projects up to \$10,000 have a 75% cost share and projects \$10,001- \$15,000 have a cost share of 50%.

Eligible projects include:

- Livestock and wildlife water developments
- Range seeding
- Riparian planting
- In-stream restoration
- Cross fence
- Cropland erosion control

Sherman County SWCD Scholarship

The Sherman County SWCD Board was pleased to award five \$1,500 scholarships this spring to these students: Cannon Dorzab, Courtney Coelsch, Josiah Carlson, Kole Martin, Logan Barrett, Natalie Martin, Rebecca Hiderbrand, and Sawyer Baker.

All of these students have met the following criteria in order to be eligible for this scholarship:

- Graduate of Sherman County School District
- Be a current high school senior or enrolled in trade school or college/university
- Have chosen a career in some area of agriculture or vocational education
- Hold a minimum GPA of 2.5

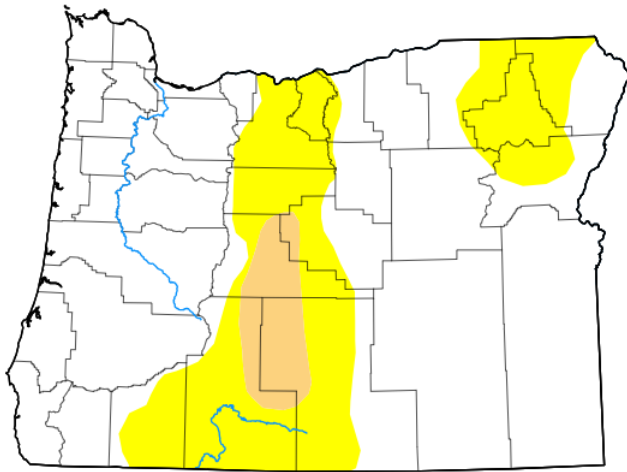
Odds and Ends

Range Drill: A Range Drill is available to landowners/operators to rent from the SWCD. It's primary function is to be able to accurately apply grass seed to rangeland areas that are too difficult for standard equipment, but it can be used to enhance existing pastures, improve decadent grass stands, or establish food plots. The drill is capable of applying any size of grass or grain seed at a 10 ft width on 12 inch spacing. It weighs approximately 4,000 lbs and is capable of being pulled with a standard three quarter ton pickup over most moderate terrain. If you would like to rent the range drill call the office (541-705-5070) to make an appointment.

Moro Weather

Oregon

[Home /](#)



Map released: Thurs. April 18, 2024

Data valid: April 16, 2024 at 8 a.m. EDT

Intensity

- None
- D0 (Abnormally Dry)
- D1 (Moderate Drought)
- D2 (Severe Drought)
- D3 (Extreme Drought)
- D4 (Exceptional Drought)
- No Data

Authors

United States and Puerto Rico Author(s):

[Lindsay Johnson](#), National Drought Mitigation Center

Pacific Islands and Virgin Islands Author(s):

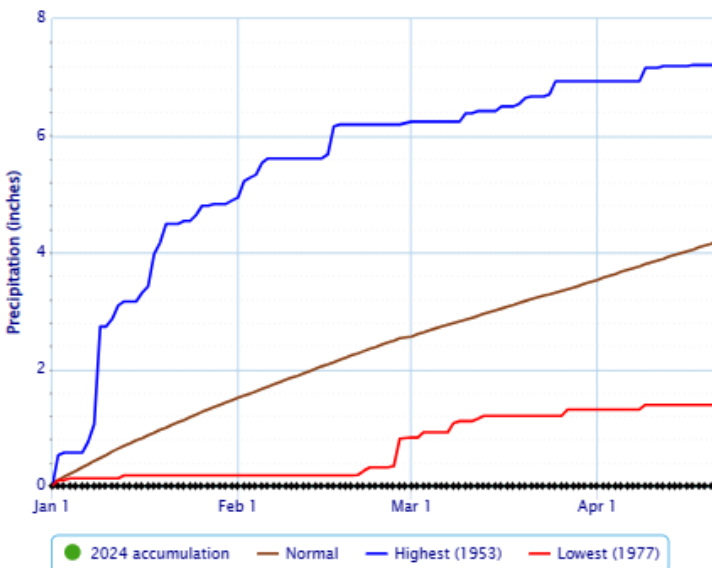
[Tsegaye Tadesse](#), National Drought Mitigation Center

NOWData - NOAA Online Weather Data

[Enlarge results](#) [Print](#)

Accumulated Precipitation - MORO, OR

Click and drag to zoom to a shorter time interval; green/black diamonds represent subsequent/missing values

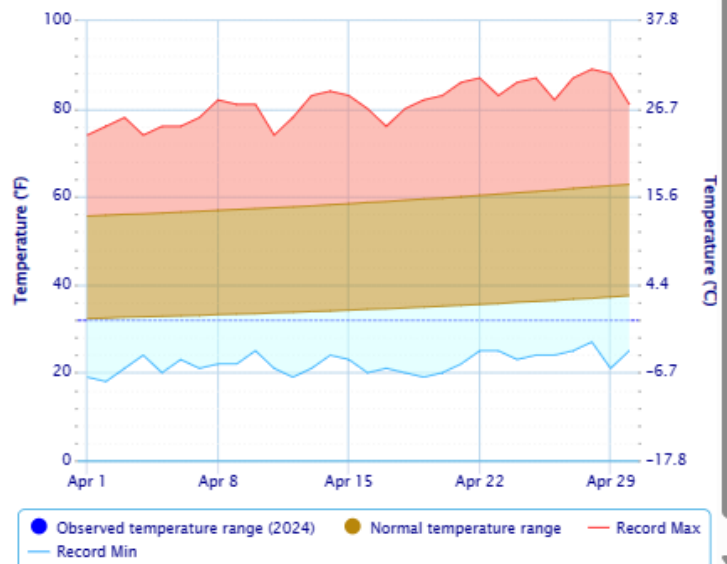


NOWData - NOAA Online Weather Data

[Enlarge results](#) [Print](#)

Daily Temperature Data - MORO, OR

Period of Record - 1898-01-03 to 2023-10-31. Normals period: 1991-2020. Click and drag to zoom chart.

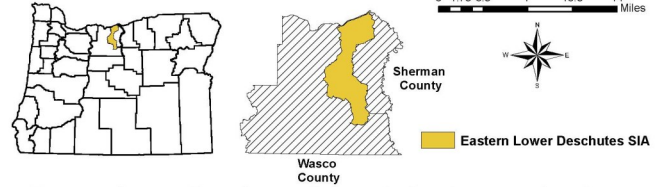
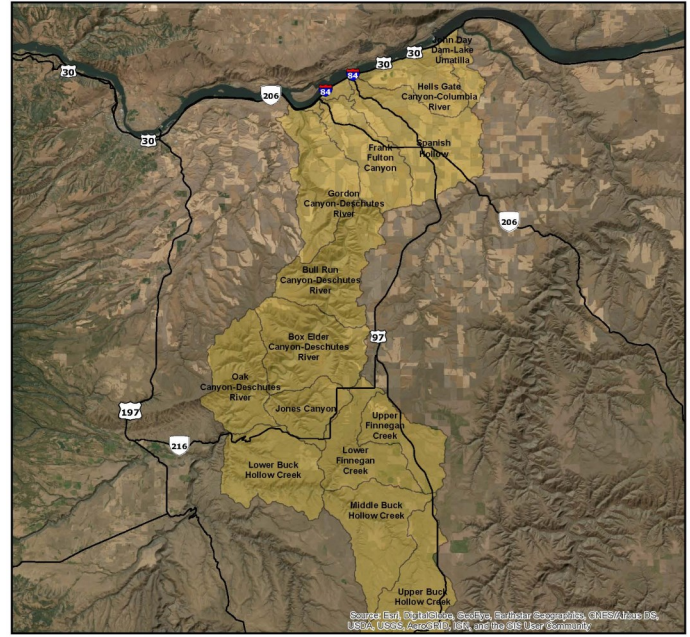


Eastern Lower Deschutes Strategic Implementation Area (SIA)

The Eastern Lower Deschutes watershed has been selected by the Oregon Department of Agriculture (ODA) as one of their Strategic Implementation Areas. This is a program in which ODA evaluates agricultural activities across the state to identify opportunities to improve water quality.

Over the last year, ODA has been working with landowners to improve areas of their land. There is a virtual open house to provide information about the SIA and what it means for you and your property. You can watch the Virtual Open House at this link: <https://www.youtube.com/watch?v=6dRdzrBEN4E>.

If you have land in the SIA area and are interested in implementing conservation projects there is funding available through the SWCD and NRCS. For assistance, please call the ODA at (503) 931-1754 and ask to speak to a Theresa DeBardelaben. You may also e-mail questions or concerns to tdebardelaben@oda.state.or.us or the Sherman Soil and Water Conservation District (SWCD) at (541)-705-5070 or visit www.shermancountyswcd.com for funding and project information.



Eastern Lower Deschutes Strategic Implementation Area



Local Advertisements

BUSINESS OWNERS!!!!

Are you interested in showcasing your business cards in our newsletter?


Advertisements are \$20 per issue or \$75 for the year! Issues are dispersed quarterly. For those of you who previously advertised, if you haven't renewed don't get left out! Call our office today!

MCP *Mid Columbia Producers, Inc.*
www.mcpcoop.com
contactmcp@mcpcoop.com
 Grain * Fuel * Oil * Seed * Farm Stores

Mid Columbia Producers, Inc. operates three offices to better serve our customers. Our main office is located in Moro, Oregon.

Moro Office | 2003 First Street | Moro, OR 97039 | 800-325-9327
 Bend Office | 913 1st Street | Bend, OR 97701 | 888-616-0690
 Hermiston Office | 345 N 1st Pl | Hermiston, OR 97838 | 541-289-5015

Your Business
Advertised
Here



Contact Sherman
County SWCD at
541-565-3216

DeGRANGE
Construction, LLC.


OR LIC# 461930
 WA LIC# DEGRACL961R3

Ken DeGrange
cell: (541) 993-0442

Mike DeGrange
cell: (541) 993-1963

office: (541) 442-5712 • fax: (541) 442-8588
 PO BOX 222 • Wasco, OR 97065 • dcl@saw.net

M.C.G.G.
Morrow County Grain Growers, Inc.




Wasco: 1-800-824-7185
 Lexington: 1-800-452-7396
 Fax: 541-442-5780

www.mcgg.net

**Bank of
Eastern Oregon**

Phone: 541-565-3712
 508 Main Street
 Moro, Oregon 97039

Your Business
Advertised
Here



Contact Sherman
County SWCD at
541-565-3216

~ CONSERVATION CALENDAR ~

May 14: SWCD Budget Hearing, 8:30am
May 14: SWCD Regular Board Meeting, 8:30am
May 27: Office closed, Memorial Day Holiday
June 11: SWCD Regular Board Meeting, 8:30am
June 11-13: Sherman County 4H Camp
June 19: Office closed, Juneteenth
July 4: Office closed, Independence Day



~ BOARD & STAFF ~

SWCD Staff

Amanda Whitman, District Manager
Marylou Martin, Office Assistant
Vacant, Watershed Coordinator
Vacant, Watershed Technician

NRCS Staff

Misty Strayhorn, District Conservationist
Becky Hilderbrand, Conservation Technician
Theron Taylor, Conservation Technician

Sherman County SWCD Board of Directors

Jesse Stutzman, Chair
Josh Hilderbrand, Vice Chair
Clint Moore, Treasurer
Trevor Fields, Secretary
Nick von Borstel, Member

"Faith is like a kernel of wheat"— Joe Bob Briggs

We're on the Web! Don't forget to check us out for current news! www.shermancountyswcd.com

We're also on Facebook @ Sherman County SWCD

The U.S. Department of Agriculture (USDA) prohibits discrimination in all its programs and activities on the basis of race, color, national origin, age, disability, and where applicable, sex, marital status, familial status, parental status, religion, sexual orientation, genetic information, political beliefs, reprisal, or because all or a part of an individual's income is derived from any public assistance program. (Not all prohibited bases apply to all programs.) Persons with disabilities who require alternative means for communication of program information (Braille, large print, audiotape, etc.) should contact USDA's TARGET Center at (202)720-2600 (voice and TDD). To file a complaint of discrimination write to USDA, Director, Office of Civil Rights, 1400 Independence Avenue, S.W., Washington, D.C. 20250-9410 or call (800)795-3272 (voice) or (202)720-6382 (TDD). USDA is an equal opportunity provider and employer.

NONPROFIT ORG
US POSTAGE PAID
MORO, OR 97039
PERMIT # 15

Sherman County SWCD
P.O. Box 405
Moro, OR 97039